



# Write The Word

Write the words in the boxes based on its sound

coat	fact	rice	clock	cone
mice	face	cuff	celery	lace

## Hard C

Makes /k/ sound before

**A O U**

## Soft C

Makes /s/ sound before

**E I Y**



# Write The Word

Write the words in the boxes based on its sound

fence	cider	center	came	came
cart	dance	prince	candle	cab

## Hard C

Makes /k/ sound before

**A O U**

## Soft C

Makes /s/ sound before

**E I Y**



# Write The Word

Write the words in the boxes based on its sound

brace	cup	camp	ceiling	pencil
attic	cane	certain	nancy	trace

## Hard C

Makes /k/ sound before

**A O U**






## Soft C

Makes /s/ sound before

**E I Y**








# Write The Word

Write the words in the boxes based on its sound

garlic	cast	city	race	cot
spice	cute	cut	medicine	cent

## Hard C

Makes /k/ sound before

**A O U**





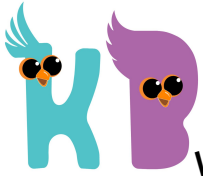

## Soft C

Makes /s/ sound before

**E I Y**

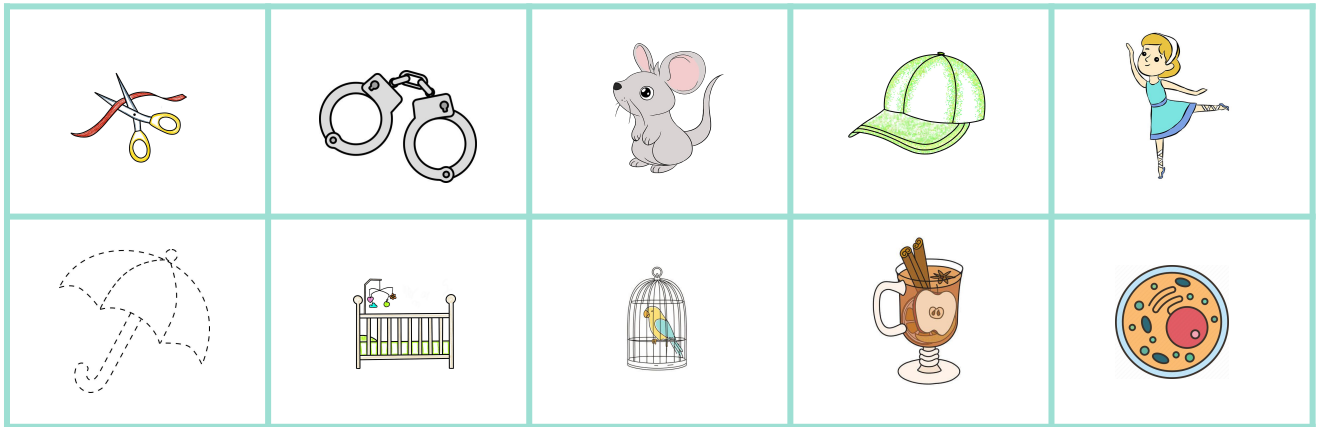




# Write The Word

Write the picture name in the boxes based on its sound



## Hard C

Makes /k/ sound before

**A O U**





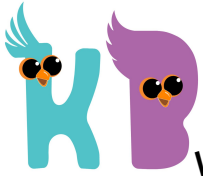

## Soft C

Makes /s/ sound before

**E I Y**

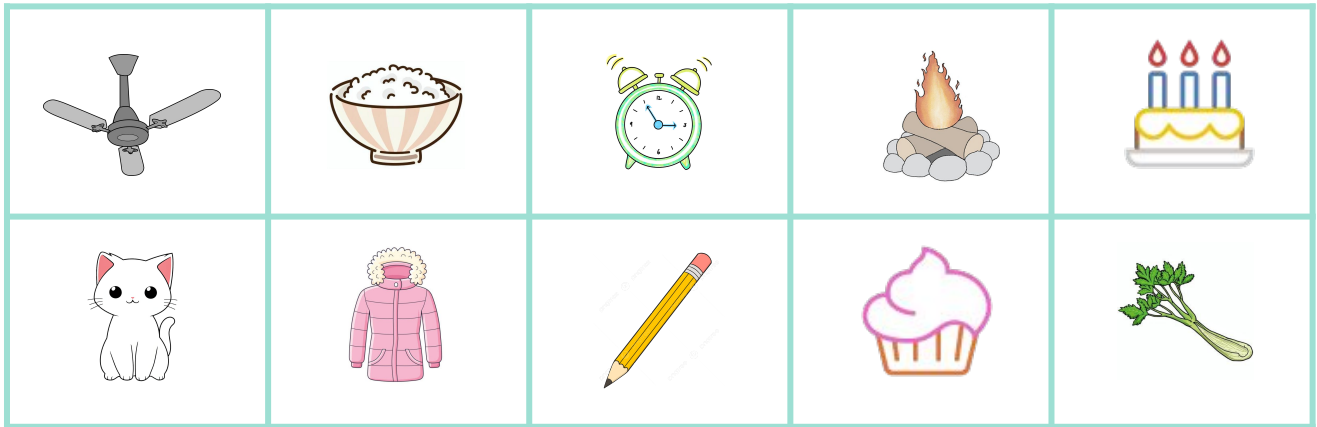




# Write The Word

Write the picture name in the boxes based on its sound



## Hard C

Makes /k/ sound before

**A O U**






## Soft C

Makes /s/ sound before

**E I Y**

